

VersaUV

LEF2-300D / 300 / 200

benchtop UV flatbed printers



ADVANCED VERSATILE & PRODUCTIVE CUSTOMISATION

Direct to object uv-led flatbed printers

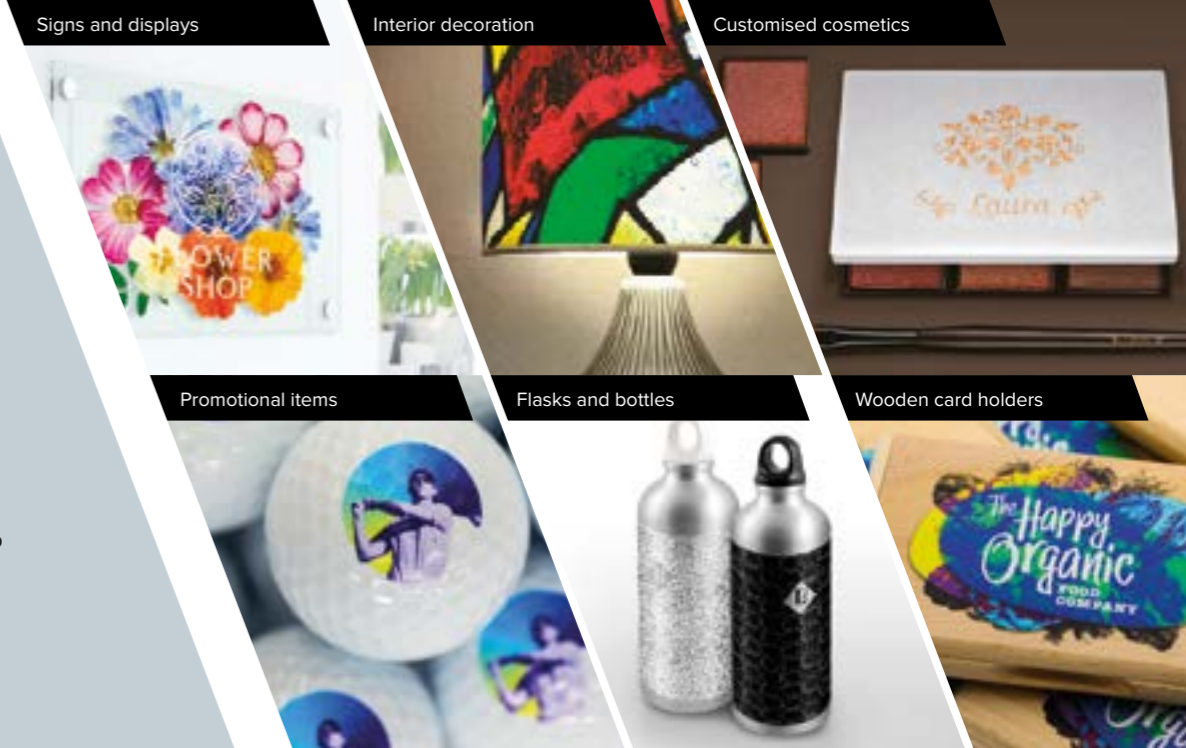
 **Roland**

ADVANCED VERSATILE & PRODUCTIVE CUSTOMISATION

INTRODUCING THE LEF2-300D, LEF2-300 AND LEF2-200 DIRECT TO OBJECT UV-LED FLATBED PRINTERS

Your customers want something unique. Give them something extraordinary with the VersaUV LEF2 series: the latest generation of Roland's award-winning benchtop UV printers. Simple to operate and packed with potential, the LEF2 series enables direct printing onto a huge range of materials and objects up to 200mm thick – producing stunning colour, realistic textures and stylish embossed effects.

Choose **LEF2-200** (508mm w x 330mm l x 100mm t) for versatile product personalisation.
 Choose **LEF2-300** (770mm w x 330mm l x 100mm t) for higher volume customisation.
 Choose **LEF2-300D** (770mm w x 330mm l x 200mm t) for printing on taller objects.



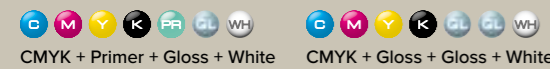
TRUE-TO-LIFE PRINTS WITH EXCEPTIONAL IMAGE QUALITY AND SPECIAL EFFECTS

With the VersaUV LEF2 series you can print photos, graphics and finely-detailed text with stunning quality. Plus, create lifelike textures, simulated 3D embossing and Braille text, as well as gloss and matt finishes, on a huge range of substrates and objects. White ink is also available to print as a base layer, for vivid colours that pop on dark, coloured or clear media.

Ink combinations LEF2-200



Ink combinations LEF2-300/LEF2-300D



FROM HARD TO SOFT MATERIALS, FROM FLAT TO CURVED OBJECTS

With the LEF2-300/200, materials up to 100 mm (3.94 in.) thick can be loaded, and a height tolerance of 2 mm facilitates printing on irregular and curved objects. Furthermore, LEF2-300D supports a maximum thickness of 200 mm (7.87 in.) in the height direction, allowing you to print not only on thicker materials, but also on a wider variety of shapes by incorporating a more diverse assortment of jigs. The VersaUV LEF2 series also supports an optional rotary axis jig for printing onto bottles and other cylindrical objects.

PRINT DIRECTLY ONTO A WIDE RANGE OF MEDIA

Low-temperature UV-LED lamps instantly cure ink on the surface of material, allowing you to print directly onto PVC and plastics, canvas, wood, leather, fabric, and more¹. Optional on-board Primer provides increased adhesion on substrates such as acrylic and glass² and a vacuum table holds thin and tricky-to-handle media in place³.



A CHOICE OF PRODUCTIVITY AND PRINT AREAS

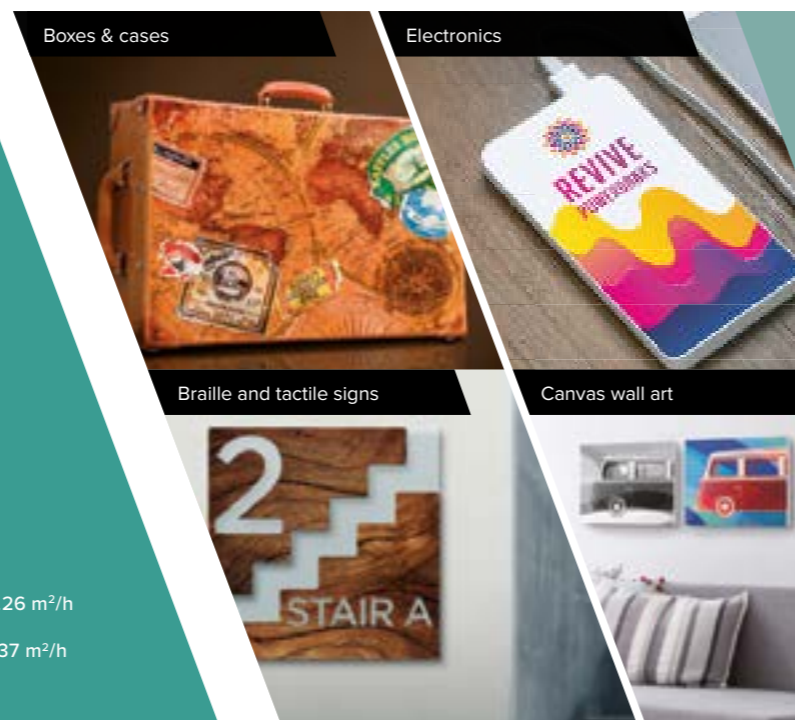
The LEF2 lineup includes three models with different work sizes and print speeds so you can choose the one that best suits your work volume and the size of the substrate or objects you want to print.

LEF2 series print area



LEF2 series throughput

	CMYK High Quality [12 pass]	CMYK Standard [12 pass]
LEF2-300D / LEF2-300	1.39 m ² /h	2.26 m ² /h
LEF2-200	0.98 m ² /h	1.37 m ² /h



PRINT JUST ONE OR MANY – ON DEMAND

Print several items or just one at a time, on demand. Create prototypes, check the finish of a printed image, produce unique gifts, or print volume runs of customised items. The fully-enclosed cover, quiet, clean operation and stylish design make the LEF2 series ideal for use in retail locations, production print rooms, design studios and manufacturing environments.

HIGH QUALITY OUTPUT, PERFORMED EASILY AND EFFICIENTLY

With a host of intuitive features and advanced functions to simplify high quality print jobs. Including:

- **Start Timer Function** Set a time for your LEF2 to automatically complete set-up procedures so you can start printing as soon as your materials are loaded.
- **Multiple Print Function** When printing the same data continuously, you can perform the next print job just by pressing the start button on the machine, without returning to the software.
- **Roland DG Printer Status Monitor** The LEF2 supports smart printing operations so you can manage your print production remotely.

POWERFUL VersaWorks 6 RIP SOFTWARE INCLUDED

VersaWorks 6 RIP software is equipped with a user-friendly menu of advanced functions to maximise performance. Automatically generate White, Clear (gloss) and Primer ink layers directly in the RIP software for streamlined production. Accurately match colours when producing high-volume work or using multiple LEF2 printers⁴.



COMPATIBLE WITH COTODESIGN SOFTWARE

When combined with cotodesign, Roland's latest design and print management software, the LEF2 series becomes a complete design-order-print solution for the in-store customisation of gift items and apparel⁵.





VersaUV LEF2-300D / 300 / 200

Specifications		LEF2-300D	LEF2-300	LEF2-200
Model		LEF2-300D	LEF2-300	LEF2-200
Printing method		Piezoelectric inkjet		
Media	Width	Max. 800 mm (31.5 in.)		Max. 538 mm (21.2 in.)
	Length	Max. 360 mm (14.2 in.)		Max. 360 mm (14.2 in.)
	Thickness	Max. 200 mm (7.87 in.) ¹	Max. 100 mm (3.94 in.)	Max. 100 mm (3.94 in.)
	Weight	Max. 8 kg (18 lb.) (When using a spacer table: Max. 2 kg (4.4 lb.))	Max. 8 kg (18 lb.)	Max. 5kg (11 lb.)
Maximum printing width / printing length		Max. 770 (w) × 330 (l) mm (30.3 × 13 in.)		Max. 508 (w) × 330 (l) mm (20 × 13 in.)
Ink	Type	ECO-UV (EUV4) 220 cc cartridge, ECO-UV (EUV4) 500 cc cartridge (White ink is not available in 500 cc cartridges.)		ECO-UV (EUV, EUV4) 220 cc cartridge
	Colour	Six colours (Cyan, Magenta, Yellow, Black, White and Gloss × 2) Six colours (Cyan, Magenta, Yellow, Black, White and Gloss) and Primer		Five colours (Cyan, Magenta, Yellow, Black and White × 2) Five colours (Cyan, Magenta, Yellow, Black and White) and Primer Six colours (Cyan, Magenta, Yellow, Black, White and Gloss)
Ink-curing unit		Built-in UV-LED lamp x 2		Built-in UV-LED lamp
Printing resolution		Max. 1440 dpi		
Distance accuracy ¹		±0.3 mm (±11.8 mil) or ±0.3% of the specified distance, whichever is greater		±0.3% of distance travelled or ±0.3 mm (±11.8 mil), whichever is greater
Position reproducibility ²		±0.2 mm (±7.9 mil) or ±0.1% of the specified distance, whichever is greater		
Connectivity		Ethernet (10BASE-T/100BASE-TX, automatic switching)		
Power-saving function		Automatic sleep feature		
Power requirements		AC100 to 240 V ± 10%, 21 A, 50/60 Hz		AC100 to 240 V ± 10%, 1.8 A, 50/60 Hz
Power consumption	During operation	Approx. 178 W		Approx. 149 W
	Sleep mode	Approx. 18 W		Approx. 13 W
Acoustic noise level	During operation	60 dB (A) or less		
	During standby	49 dB (A) or less		
Other dimensions		1560 (W) × 955 (D) × 676 (H) mm (61.4 [W] × 37.6 [D] × 26.6 [H] in.) [When the ink-cartridge tray is attached; 1866 × 955 × 676 mm (73.5 × 37.6 × 26.6 in.)]	1560 (W) × 955 (D) × 576 (H) mm (61.4 × 37.6 × 22.7 in.) [When the ink cartridge tray is attached; 1866 × 955 × 576 mm (73.5 × 37.6 × 22.7 in.)]	1202 (W) × 962 (D) × 549 (H) mm (47.3 × 37.9 × 21.6 in.)
Weight		166 kg (366 lb.)	144 kg (317.5 lb.)	110 kg (242.5 lb.)
Environment	During operation	Temperature: 20 to 32°C (68 to 90°F) (22°C (72°F) or higher recommended), Humidity: 35 to 80% RH (no condensation)		
	Not operating	Temperature: 5 to 40°C (41 to 104°F), Humidity: 20 to 80% RH (no condensation)		
Included items		VersaWorks 6 RIP software, power cable, cleaning liquid, drain bottle, manuals, etc.		

¹ Use a spacer table for printing targets with a thickness of 0 to 100 mm (0 to 3.94 in.).

² Temperature for LEF2-300 and LEF2-300D is 23°C (73°F) and for LEF2-200 is 25°C (77°F). Humidity: 50% RH.

Specifications, designs and dimensions listed may be subject to change without notice.

Options		VersaWorks 6 System Requirements	
ECO-UV Ink	Model	Description	Operating system
	EUV-CY/EUV4-CY	Cyan, 220 cc	Windows® 10 (32/64 bit), Windows® 8.1 (32/64 bit), Windows® 7 Ultimate/Professional (32/64 bit)
	EUV-MG/EUV4-MG	Magenta, 220 cc	CPU
	EUV-YE/EUV4-YE	Yellow, 220 cc	Intel® Core™2 Duo, 2.0 GHz or faster recommended
	EUV-BK/EUV4-BK	Black, 220 cc	RAM
	EUV-WH/EUV4-WH	White, 220 cc	2 GB or more recommended
	EUV-GL/EUV4-GL	Gloss, 220 cc	Video card and monitor
	EUV4-5CY	Cyan, 500 cc	A resolution of 1280 × 1024 or more recommended
	EUV4-5MG	Magenta, 500 cc	Free hard-disk space
	EUV4-5YE	Yellow, 500 cc	40 GB or more recommended
	EUV4-5BK	Black, 500 cc	Hard-disk file system
	EUV4-5GL	Gloss, 500 cc	NTFS format
	EUV-PR ¹	Primer, 220 cc	Optical drive
	SL-CL	220 cc	DVD-ROM drive
VT-200	For LEF2-200	Other	
		Internet connection recommended	


Notes from the internal pages


¹ Ink adhesion results may vary depending on the substrate and printing conditions. For best results, test print before final production. ² For best primer results, it is strongly recommended that users test for adhesion on specific substrates prior to final production. ³ Built-in vacuum table with the LEF2-300. Optional vacuum table available for the LEF2-200. ⁴ Valid only when using the same model printers with the same ink type and configuration. Files must be printed with the same print settings including "Media Type" and "Print Quality." ⁵ cotodesign is compatible with VersaUV LEF range, VersaSTUDIO BT-12/BN-20, METAZA MPX-95, GS-24 and LD-80.

About White Ink

Due to the nature of white ink, the pigment will settle in the cartridge and ink flow system, requiring you to shake the cartridge before each use.

<p>Expand Your Print Business with Our Laser Engraver</p> <p>With the addition of our Laser Engraver LV-290/180, you can easily cut or engrave a range of UV-printed substrates, including acrylic, 2-ply laminate, wood, leather and more. Expand the breadth of applications you can produce for maximum profit potential.</p> 	<p>Optional Air Filtration System</p> <p>An optional air filtration system is available for the LEF2 series. This includes an activated carbon filter which effectively removes the odour and volatile substances that occur during printing. This unit can be placed easily underneath the LEF2 series.</p> 	<p>Optional Vacuum Table</p> <p>The optional vacuum table is ideal for efficiently and accurately securing thin materials and delicate media such as PVC and PET films, acrylic boards (max 3mm thick), leather and more, for stable printing and high-quality results. Optional table for LEF2-200, LEF2-300 and LEF2-300D feature built-in vacuum table.</p>	<p>Optional Rotary Axis</p> <p>The LEF2 series also supports an optional rotary axis jig for printing onto bottles and other cylindrical objects.</p>
---	--	---	--

<p>This device is capable of printing on a wide variety of substrates. However, the print quality or the ink adhesion may vary according to the substrate used and it is strongly recommended to test the substrate for compatibility to ensure optimal print results.</p>		<p>Vaporised components may slightly irritate the eyes, nose and/or throat during and following printing with this product. If continuously printing in a closed space, the density of volatile compositions will accumulate and may irritate the eyes, nose and/or throat. Roland DG strongly recommends that you install a ventilation system and use this product in a well-ventilated room. For more information, please contact your local distributor or dealer.</p>
--	---	--

<p>Roland Care Warranty</p> 	<p>Enjoy the peace of mind of having one of the most comprehensive warranty packages in the industry, included with the VersaUV LEF2 series.</p>
--	--

Roland DG reserves the right to make changes in specifications, materials or accessories without notice. Actual output may vary. For optimum output quality, periodic maintenance to critical components may be required. Please contact your Roland DG dealer for details. No guarantee or warranty is implied other than expressly stated. Roland DG shall not be liable for any incidental or consequential damages, whether foreseeable or not, caused by defects in such products. PANTONE® is the property of Pantone LLC. All other trademarks are the property of their respective owners. Reproduction or use of copyrighted material is governed by local, national, and international laws. Customers are responsible for observing all applicable laws and are liable for any infringement. Roland DG Corporation has licensed the MMP technology from the TPL Group.